

# ANTIK



Handicrafts represents the vertu and art of human societies





# About us

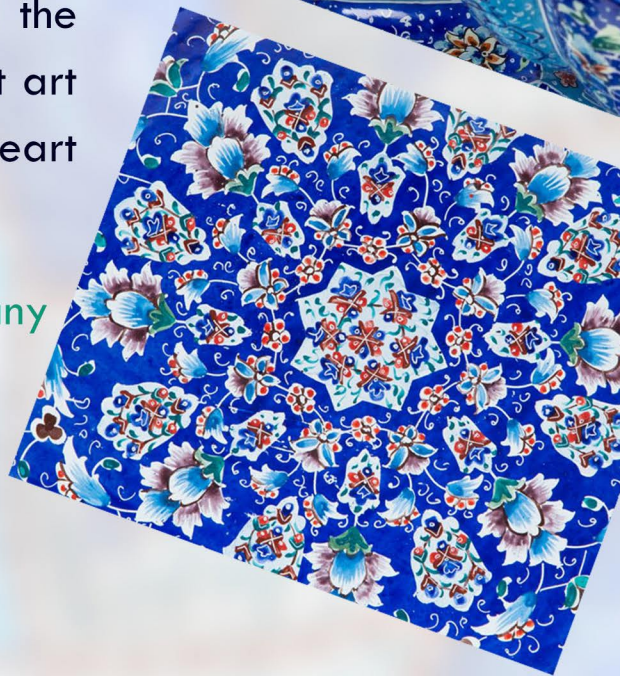
## History

Antik art group is established in 2014 and with the goal of presenting quality hand crafted goods to interested people and contributed to various fields of crafts including Persian enamels production, packaging and distribution.

Craftsmen and artists of this company, each have unique characteristics noticed from all over the country and are chosen for their individual talents, production, innovation and quality, combination of different technics and possession of valid licenses, there for this company having professional forces organizing a network of countries outstanding artists a platform for the production and supplying of genuine and fitting for Up-to-date needs and present its products considering the taste of customer has varied designs with plausible range of prices and unique packaging.

Antik has this ideal in mind that true craftsmanship be known to all lovers of authentic art around the world. We have this believe in antik group that art is the universal language for it targets ones heart and soul we are gathered with this belief.

Antik would be a powerful and valued company equivalent of quality and authenticity.





The background of the slide features a blurred image of hands interacting with a tablet. Overlaid on this are various digital graphics: a line graph with an upward-pointing arrow in the top left, a network of nodes and lines in the top center, a hand-drawn line graph on the left side, and a circular gauge showing '35%' in the bottom right. A decorative, intricate pattern is visible on the far left edge.

## Education Department

This section is holding workshops and educational courses for anyone who wants a decent income through their ancestors' craftsmanship is another activity of antik company in addition to conveying art in a manner principled and correct from generation to generation provides income. Generating opportunities for art lovers and on the other hand with the selection and recruitment of top students human resources that are the main asset to this company are appropriately and desirably maintained also providing necessary educations for students so they can receive valid licenses.



## Research and Development

Study and research on handicrafts and culture of the countries of the world and sharing this activity in the form of detailed and appropriate content is a part of companies' main activities and activities by gathering a group of professionals and experienced experts and the formation of a specialized R&D team have been able to review limits of raw materials used to optimize products and overcome common problems delivering innovative products and is proud to support quality production in addition to taking an effective step for the scientific promotion of handicrafts and authentic arts.





A man with glasses is focused on a digital tablet, using a black stylus with a yellow tip. He is wearing a blue denim shirt over a grey striped t-shirt. The background is a bright, modern office with large windows and blurred computer monitors. In the bottom right corner, there are abstract geometric shapes in dark blue and teal. The overall image conveys a sense of professional creativity and design.

## Graphic design and photography

A professional photographer has a different view of the world and tries to share it through his lens. This department is obligated to convey this joy and good vibe to others. Also, the specialist in this department designs, innovates, and produces smartly based on the research and creativity of a traditional or modern handicraft product. Proposed design and the product manufactured on the basis of it must meet the needs of society and its culture. The product should also be functional and of good quality.

These have been evaluated by experts and after verifying and fixing any defects, it will be included in the production cycle of the company. Manufacturing products suited for people's daily life is one other activity that artists of this company do.





## IT department

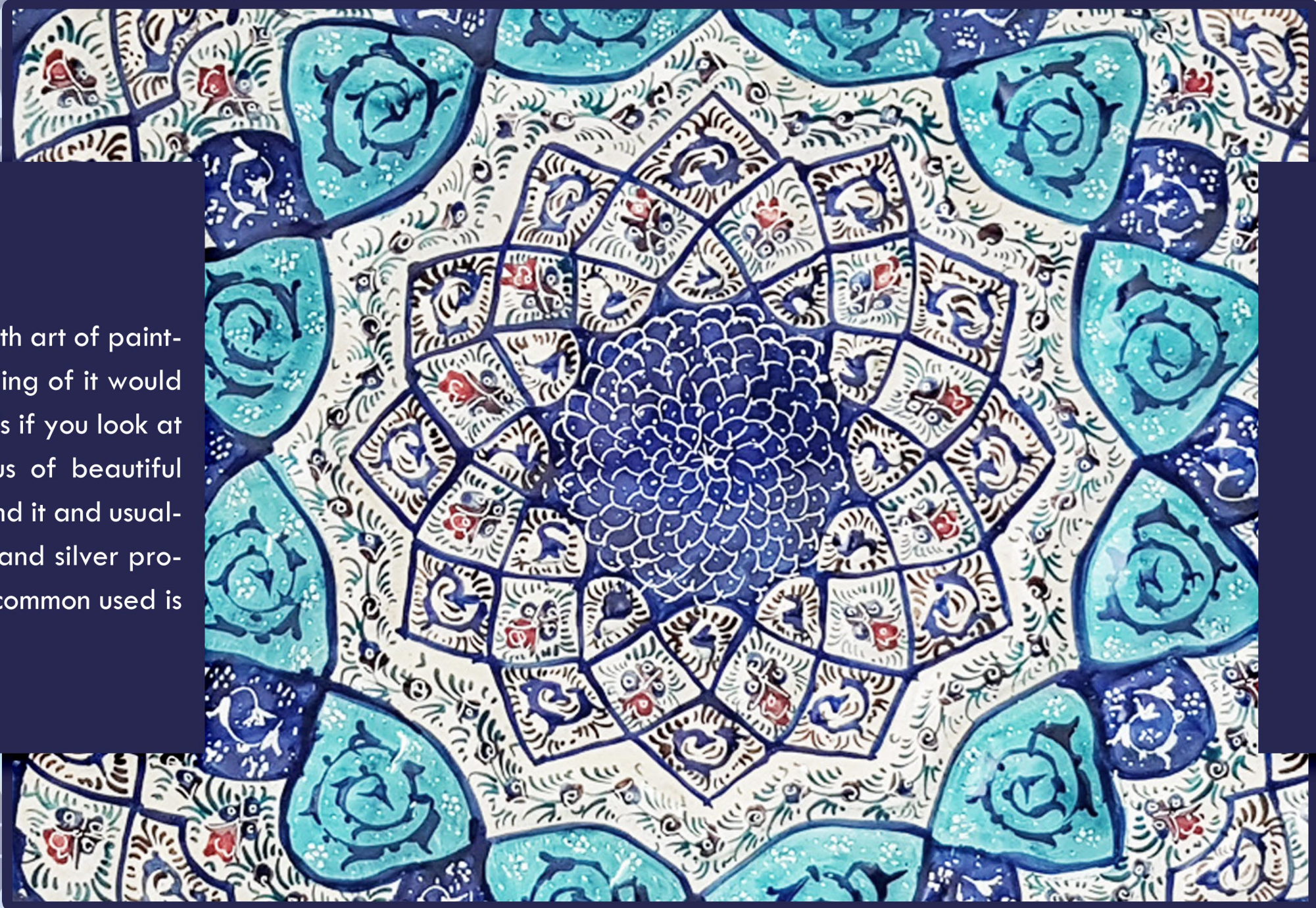
The company has always put several golden principles as the most important principles for its work one of them which is considered most important is attention to demands and needs of customers and support for presenting products and producing what they desire this company with making an international market of handicrafts gives you the opportunity to visit, select and buy handicrafts from around the world in the shortest possible time this company is responsive to all tastes by diversifying its products.



# Products

## Enamels

Enamel is the art of dust and fire that is combined with art of painting and results in beautiful patterns the literal meaning of it would be blue sky as its base color under patterns usually is if you look at these enamel crafts with art googles it reminds us of beautiful width of sky. This art has 5000 years of history behind it and usually is practiced on copper but can be done on gold and silver producing enamels has different methods but the most common used is enamel painting.





## Enamel painting

Enamel painting is the customary way used today and is done from coating premade piece made by a copper craft man in white clear glaze the coating would be done several times and every coating is done in 700c of heat till the texture is fixed then the piece would be painted and again is fired in 400c-500c till the pattern is finished chemical dyes are now used in object painting, while in the past, the colors used were herbal or mineral. Enamel transparency is also obtained from the presence of tin oxide.







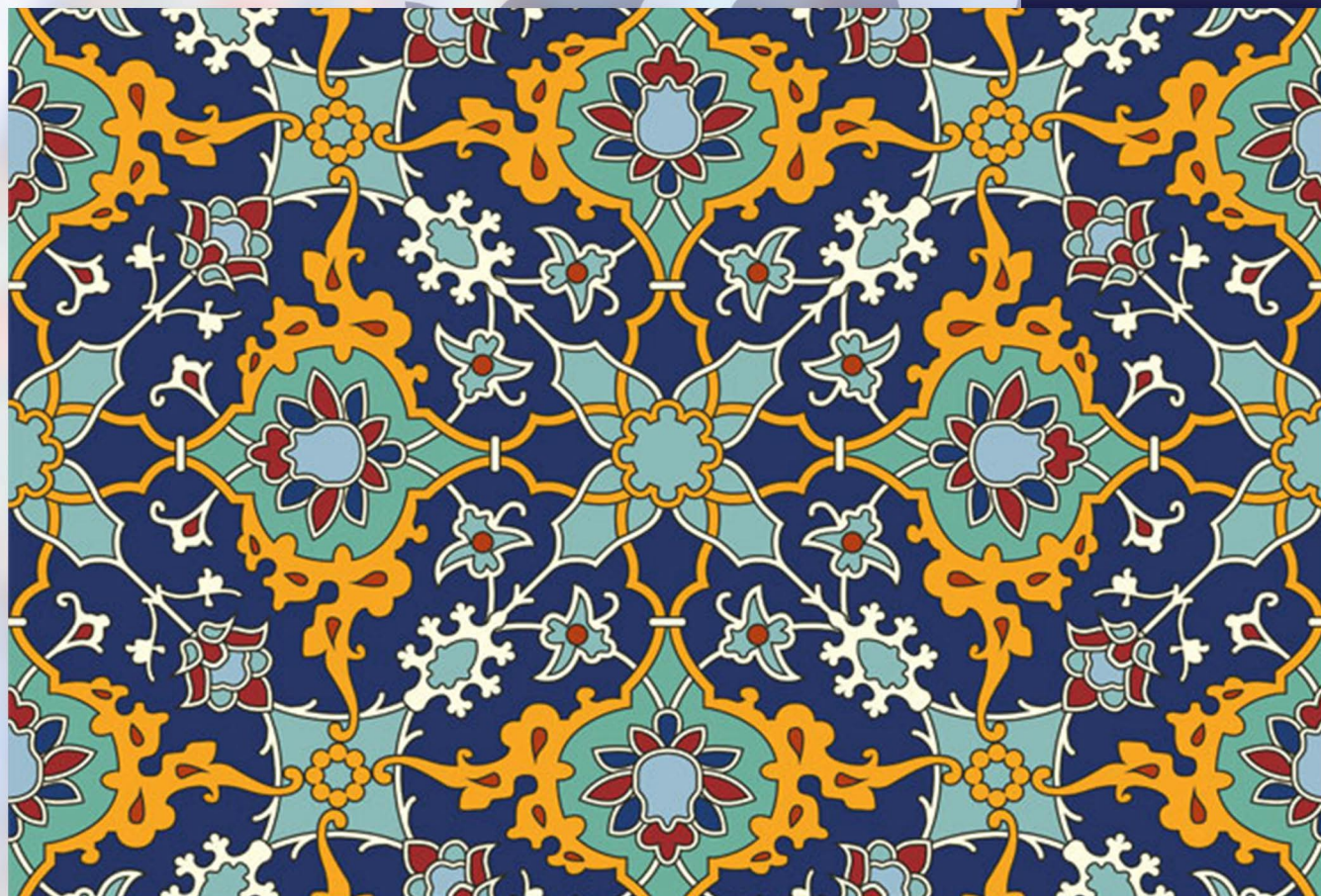
## Enamel products

Enamel craftsman make different products the most common are plates vases bowls cups picture frames panel frames that are combined with other arts like gilding inlaying Miniature and Jewelry.

Paints used in enamel:

- ▶ Herbal colors used in chit-making
- ▶ Mineral colors used in enamel
- ▶ Metal colors used on pieces





## 10 important points for noticing quality enamel with metal base

The enamel infrastructure should be uniform and free of redundant and waste parts, The edges of the infrastructure should be en bloc, free of green color and their surface shall not be cracked the reliance surface should be flat and Enamel glaze should be free of cracks, bumps, shells, bubbles, holes and roughness its concentration should be same in all parts, The surface of the enamel piece should be sufficiently shiny enamels transparency gloss and polish reflects the quality of dye and firing process but if you feel rough on the dish it shows poor quality the thickness of paint and decoration should be the same in all parts and colors should not blend at borders of patterns and be in harmony patterns should be untouched. The motifs must be original and in coloring, the original design is preserved and the brushing should be done with the utmost care. The back of the container should have a high quality glaze with no cracks. Cracks are shows that the dish was overcooked during furnace operation. A quality product has artists name, date of making, series number and etc. carved on them.





## Turquoise inlaying (turquoise implantation on dishes)

Inlaying turquoises is one of handicrafts done by setting little pieces of turquoise on dishes, Jewelry and decorative objects (from bases of copper, brass, silver, bronze or bronze) in a tile manner using some black polish between the pieces. Number of used stones decreased space between stones and organization of stones used in this art will give the product its artistic value and shows high quality. These days center of this art is Isfahan.

Turquoise inlaying art, like many arts, is both decorative and luxurious and since it is used in dishes such as sweets, pots, vases, rosewood and so on, they also have a practical application





## copper dishes

These days copper dishes has made fans all around the world copper is used in two ways now both practically and decorative. Copper is ductile and has a hammering property that's why it is used for Ghalamzani (hand engraving on metal). Copper is delicate and ductile but also it is so durable and you should not be worried for it to dent or disfigure.



# Contacts us

Phone: +98 9131942131  
+98 2128429630  
Email: [info@grandhandicraft.com](mailto:info@grandhandicraft.com)  
Instagram: [antik\\_company](#)  
FaceBook: [antikcom](#)  
Pinterest: [antikcompany](#)  
LinkedIn: [antikcompany](#)  
Twitter: [antik\\_company](#)







+98 913 194 2131  
[www.grandhandicraft.com](http://www.grandhandicraft.com)